



HARDOX®

WEAR PLATE

WHAT, WHY, WHERE?

Hardox® 500 TUF:

- **What:** Hardox® 500 TUF is the world's hardest wear plate with structural properties combining the best properties from Hardox® 450 and Hardox® 500. It delivers high strength, high hardness, and guaranteed toughness in a single wear plate.
- **Why:** 2X the service life compared to a 400 HBW AR steel, and up to 50% longer service life relative to a 450 HBW steel. Little to no preheating to weld unlike other 500 HBW products on the market.
- **Where:** Dozer blade skins, bucket liners, truck beds, excavator buckets, agricultural equipment, impact crusher side liners, jaw crusher cheek plates, log washer paddles.

Duroxite® 201:

- **What:** Chromium carbide overlay plate is developed for severe wear and impact applications applying specially formulated abrasive materials on Hardox® 450 backing plate.
- **Why:** Up to 10 times the service life over AR400 plate.
- **Where:** Chutes, buckets, punch plate, bucket lip shrouds, bucket side shrouds, coal discharge chutes.

Duroxite® 200 Wire:

- **What:** Duroxite® 200 Wire is a flux-cored welding wire for hardfacing components subject to severe abrasive wear and moderate impact applications using an open-arc welding process. Suitable for single-layer or double-layer.
- **Why:** Same wear resistance guaranteed from surface through 75% depth of overlay in multi-layer deposit.
- **Where:** Ground engaged teeth, slurry pipe, dredge buckets and lips, dragline bucket liners, crushing equipment, rippers, sizing screens, and pump impellers.

Bi-Metal Wear Blocks:

- **What:** Bi-Metal Wear Parts are made from a composite material combining chrome-moly white iron with very high wear resistant properties (700 BHN) and the workability of a mild steel backing plate.
- **Why:** Wear blocks are an exceptional product designed to work in the toughest impact and abrasive environments to reduce downtime and increase output.
- **Where:** buckets (excavator, loader, dragline, face shovel), crusher spider arm guards, feed and discharge chutes, feeder grizzly bars, shredder and grinding mills, and dredging equipment.

IN HOUSE CUSTOM FABRICATION



**SCREEN
DECK
PROTECTION
PLATES**

**HARDOX®
500TUF 1/4"**



**LOADER
BUCKET
LINER**

**HARDOX®
500TUF 3/8"**

**DUROXITE
WIRE
HARDFACING**



**PUNCH PLATE
SIDE TENSION**

**HARDOX®
500TUF 1/2"**



**FEEDER FLOOR
AND GRIZZLY**

**HARDOX®
500TUF 1"**



**CHUTE
DISCHARGE
LIP**

**STUD WELDED
NO HOLES**

**HARDOX®
500TUF 1/4"**



**FEED CONE
REPLACABLE
LINER**

**HARDOX®
500TUF 1/2"**



LOG TIPS

**HARDOX®
500TUF 1"**



**IMPACT
CRUSHER
SIDE LINERS**

**HARDOX®
500TUF 1"**

HARDOX®

WEARPARTS

YOUR ONE STOP WEAR SHOP

AIS Stocking Inventory

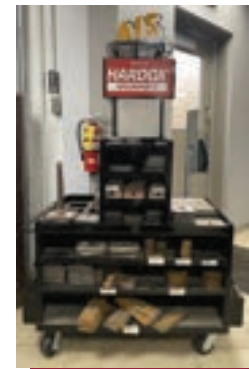
Hardox 8' x 24' Plate

- HARDOX 450: 1-1/4" 1-1/2" 1"
- HARDOX 500: 1-1/4" 1"
- HARDOX 500 TUF: 1/4" 5/16" 3/8" 1/2" 5/8" 3/4" 1"
- HARDOX 550: 1"
- HARDOX 600: 20MM 1-1/2"



Hardox Wear Squares & Strips (Pre-Cut for Quick Fixes)

- DX 450 1/4": 4"X4" 5"X5" 6"X6" 10"X10"
- DX 450 3/8": 4"X4" 5"X5" 6"X6" 8"X8" 10"X10"
- DX 450 3/4": 6"X6"
- DX 500 1-1/4": 6"X6" 8"X8"
- DX 500TUF 1/4": 6"X12" 10"X20"
- DX 500TUF 3/8": 6"X12" 10"X20"
- DX 500TUF 1/2": 4"X4" 4"X24" 4"X32" 5"X5" 6"X6" 6"X12" 8"X8" 10"X10" 10"X20"
- DX 500TUF 1": 5"X5" 10"X10"



Bi-Metal Wear Buttons, Blocks, and Cutters

9-13/16" L
9-13/16" W
3" H



HW22CG23

9-7/16" L
3-1/8" W
7/8" H



HW22BL79

2-15/16" D
1-1/8" T
2-3/8" D
1-1/8" T



HW22BP34 & HW22DF46

7-7/8" L
1" W
1-15/16" T



HW22PL59

15-3/4" L
1" W
2-5/16" T



HW22PH99