

TRACKED EXCAVATOR | 245XR



OPERATING WEIGHT
56,606 – 61,749 lbs

ENGINE POWER
173 hp (129kW)

BUCKET CAPACITY
0.45 – 1.63 y³

MINIMUM SWING.

At just 5ft 8in, the 245XR has a 40% shorter tailswing than the conventional 220X making it ideal for work in confined urban sites and highways.



UNRESTRICTED WORKING

A reduced front swing makes working in tight spaces easier. The 245XR can work in a radius 5ft 3in less than the 220X.



MAXIMUM SPACE.

Despite having reduced tail swing, the new 245XR still boasts one of the biggest, most comfortable, quiet and easy to operate cabs on the market.

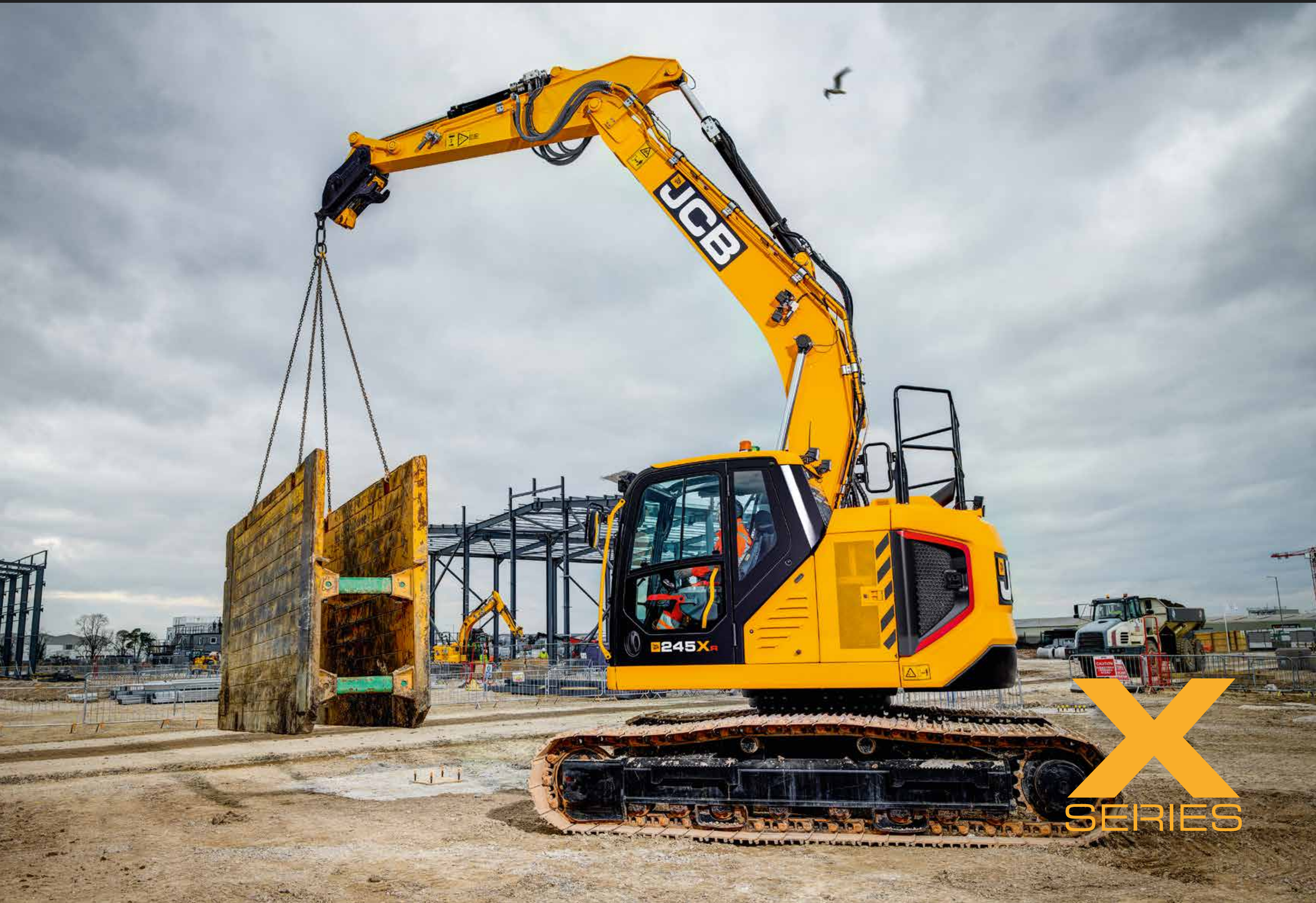


BEST OPERATOR ENVIRONMENT

Customer-led control layout, with operator feedback directly contributing to the final design.

EXTREME STRENGTH.

It's taken extensive hydraulic, electrical and structural development and testing to build you a machine that doesn't just look strong, but is strong.



DIESELMAX RELIABILITY

Our fuel efficient 245XR DieselMax engines have been tested to 110,000 hours in 70 different machines globally.



EXTRAORDINARY ATTENTION TO DETAIL.

The 245XR follows the same high quality X Series design ethos and utilises cutting-edge production facilities to bring you not just great excavators, but exceptional ones.

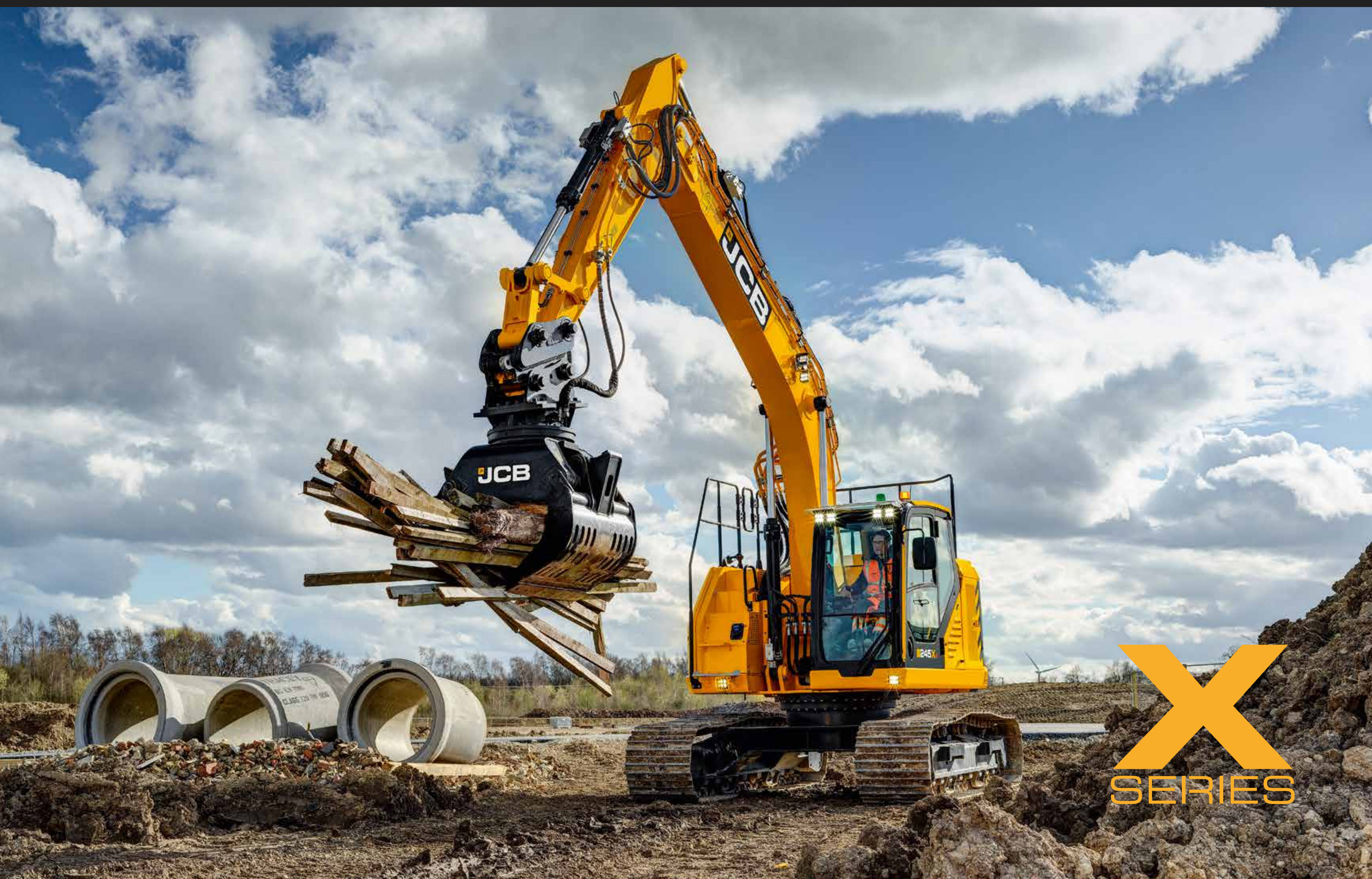


WORLD-CLASS FINISH

All components are painted in our state-of-the-art facility for a high quality finish.

EXCELLENT CONTROL.

Proven Japanese components deliver precise, efficient control. Customizable electro-proportional controls allow operators to set their preference of speed and control of attachments.



EFFORTLESS WORKING

Selectable Swing Smoothing as standard gives optimum performance in any application.



TRACKED EXCAVATOR | 245XR

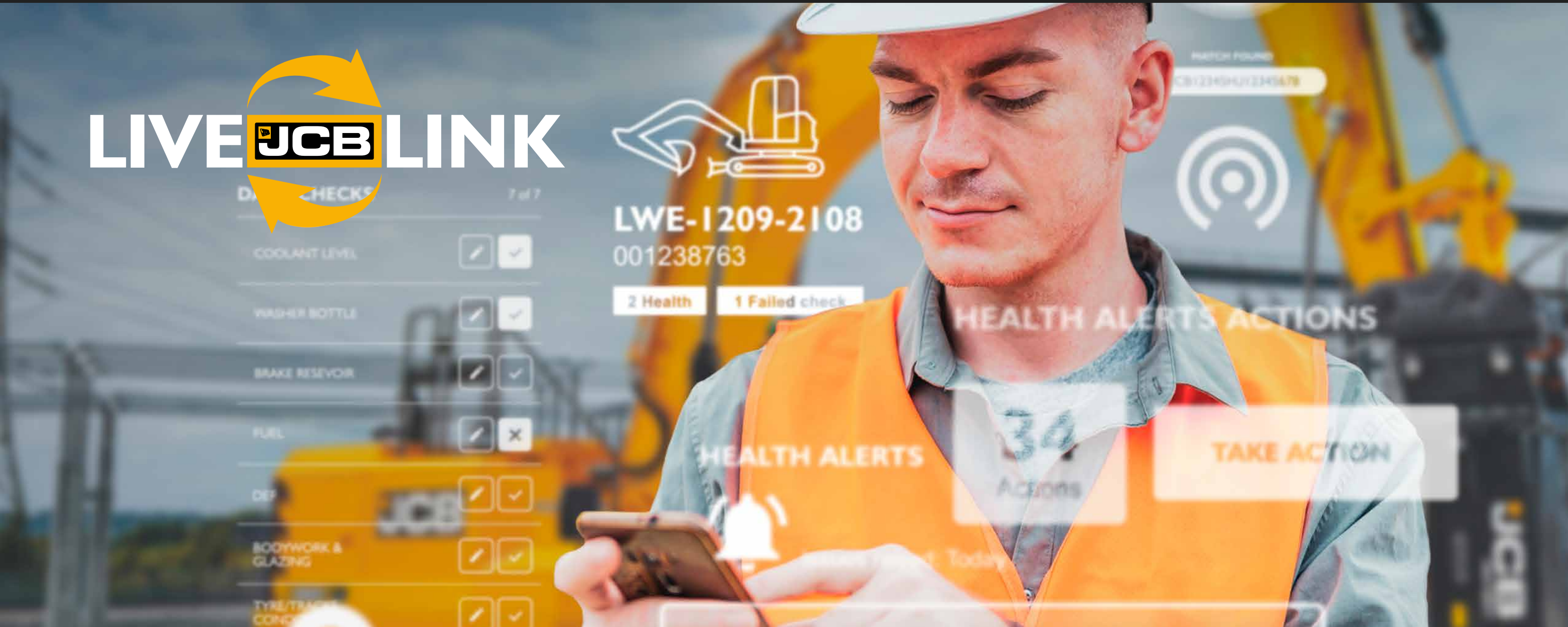


SPECIFICATION.

MODEL	245XR MONO	245XR TAB
Travel Speed (High/low)	3.54 / 1.99 mph	
Tractive effort	46,648 lbf	
Max digging reach*	32ft 1in	31ft 1in
Max digging depth*	21ft 9in	18ft 5in
Machine Weight**	55,759 lbs	57,327 lbs
Max bucket tearout*	33,272 lbf	

*9ft 10in dipper

**Figures include 1.43 y³ bucket 1,702 lbs, operator 165 lbs, full fuel tank and 9ft 10in dipper, 2ft 4in tracks



STANDARD FEATURES.

- Side guard rails
 - 5 years LiveLink subscription
 - 2000 hour engine air filter life
 - JCB 448 DIESELMAX StIV
 - Graphite & bronze bushes
- Factory fitted HBCVs
 - Start-stop button
 - Fully flat glass cab
 - Bluetooth radio
 - Seat-mounted control pods

The JCB logo is displayed in white text on a black rectangular background, which is itself set within a larger yellow rectangular frame.

245XR FEEDBACK

UNDERWOOD GROUNDWORK LTD

X
SERIES

“The 245XR surpassed my impressions to what I thought it would be... 245X took it to another level”

ANDY UNDERWOOD | UNDERWOOD GROUNDWORK LTD

245XR X-SERIES EXCAVATOR

REQUEST A QUOTE

The JCB logo is displayed in white text on a black rectangular background, which is itself set within a larger yellow rectangular frame.

www.jcb.com

