

# 326 P

## Compact Wheel Loader



JOHN DEERE







## ***RUN SMALL, DREAM BIG***

Your workday is usually long, your tasks can take you into tight places, and you need multipurpose equipment to get everything done. Meet the 326 P-Tier Compact Wheel Loader, the smaller do-it-all machine that combines head-turning maneuverability, sure-footed stability, and comfortable capability with productive power, responsive travel speed, and ease of serviceability. With our new telescopic lift arm designed to enable unparalleled lifting flexibility and a wide range of reliable standard features and proven options, this highly adaptable multitasker is equipped to deliver big results for your operation.



## 326 P-TIER COMPACT WHEEL LOADER

## FEATURES

### Flexible finesse

Specifically designed and purpose-built telescopic lift arm enables loads to be lifted over 16 feet and extends height and reach in stacking applications. Operators can extend and retract the telescopic arm on the main control lever through the proportional mini-joystick controller, for effortless fingertip functionality.

### Window on the world

Cab roof features a window and screen for an optimal view of the telescopic boom as it extends or retracts. Dedicated wiper blade makes it easy to clean the overhead window.

### Intelligence in action

Intelligent overload warning system provides real-time information about the current load and stability of the machine, to keep operators in the know as they go.

### Turn things around

Industry-exclusive Articulation Plus™ steering system combines 30 degrees of articulation with 10 additional degrees of rear-wheel steer. Reduced articulation angle design delivers tighter turns that are more stable, especially with large loads, than comparably sized loaders without Articulation Plus.

### Intuitive control

Cutting-edge nine-inch touch-screen adjustable display details vital machine data, system status and warnings, and positioning specifics, providing intuitive programming menus and enhancing the operator experience. Electrohydraulic controls including customizable Return to Dig, Boom Height Kickout, and Return to Carry settings optimize loading and stacking functions, to propel productivity.



**MORE  
STABLE\***

+



**MORE  
MANEUVERABLE\***

+



**MORE  
CAPABLE\***

\*Compared to leading competitive articulated loaders of the same size not equipped with Articulation Plus.



### **Fast getaway**

With a standard top speed of over 23 mph, the 326 P-Tier can make some pretty quick moves on and between jobsites.

### **Bright in low light**

In-cab lighting activates when the door is opened to illuminate cab entrances and exits. Opt to add two boom lights plus two more front and rear lights to further increase visibility in dark environments.

### **Smooth moves**

Load-sensing AutoShift powertrain technology eliminates productivity-interrupting manual shifts between gear ranges while providing smooth direction changes.

### **Get a grip**

Manual low-speed 100-percent differential lock delivers the ground-gripping tractive effort needed to dive deep into the pile and help heap the bucket. Rimpull control manages power to the wheels, allowing the operator to select the optimal setting to help reduce tire and driveline wear.





## 326 P-TIER COMPACT WHEEL LOADER



**STANDARD LED FRONT/REAR  
WORKLIGHTS & OPTIONAL BOOM LIGHTS  
+ ADDITIONAL FRONT/REAR LIGHTS  
ENHANCE VISIBILITY**

### **Keep your cool**

Engine compartment and cooling package are designed to optimize airflow and minimize the amount of debris entering the system. Access to all daily service checks and cooler cores is from ground level.

### **Here to back you up**

Parts and service are available at over 1,400 John Deere dealer locations throughout North America.

### 326 P-TIER WHEEL LOADER SPECIFICATIONS

While general information, pictures, and descriptions are provided, some illustrations and text may include product options and accessories NOT AVAILABLE in all regions, and in some countries products and accessories may require modifications or additions to ensure compliance with the local regulations of those countries.

Engine	326 P-TIER		
Manufacturer and Model	Yanmar 4TNV98CT	Gross Rated Power at 2,400 rpm (ISO 14396)	54 kW (73 hp)
Non-Road Emission Standard	EPA Final Tier 4/EU Stage V	Peak Torque at 1,800 rpm (ISO 14396)	280 Nm (206 lb.-ft.)
Cylinders	4	Engine Bore and Stroke	98 x 110 mm (3.89 x 4.33 in.)
Valves per Cylinder	4	Lubrication	Pressure system with full-flow spin-on filter
Displacement	3.3 L (203 cu. in.)	Aspiration	Turbocharged
Net Peak Power at 2,400 rpm (SAE J1349 / ISO 9249)	52 kW (71 hp)	Air Cleaner	Dual safety element dry type
Cooling			
Fan	Hydraulically driven, proportionally controlled		
Engine Coolant Rating	−37 deg. C (−34 deg. F)		
Powertrain			
Type	Hydrostatic (HST) with infinitely variable speed control over full range of operating speeds; 2 speed ranges; joystick-mounted F-N-R; acceleration pedal; HST inching pedal, which allows infinitely reduced travel speeds while maintaining full engine rpm and hydraulic flow		
2 Travel Speeds in Forward and Reverse (equipped with 400/70R20 tires)			
Gear 1	18 km/h (11.0 mph)		
Gear 2	38 km/h (23.5 mph)		
Axes	Fixed, 100% differential, manually engaged front axle; fixed, conventional differential rear axle		
Rear Axle Oscillation Versus Front Axle	16 deg. total, stop to stop		
Differentials	Manual (push-button) 100% locking front, conventional rear		
Maximum Rise and Fall, Single Wheel	370 mm (14.5 in.)		
Steering	Hydraulic power steering (SAE J1511); 30-deg. articulation left and right with mechanical-actuated rear-wheel steering		
Steering Wheel Turns, Stop to Stop	4¼ (2 left / 2¼ right)		
Articulation Angle	60-deg. arc (30 deg. each direction)		
Final Drive	Heavy-duty outboard planetary		
Brakes (SAE J1473 / ISO 3450)			
Service Brakes	Hydraulically actuated, self-adjusting internal wet-disc brake and driveline drum brake		
Parking Brake	Automatically spring-applied, hydraulically released, internal wet disc		
Hydraulics			
Main Pump Flow (loader and steering)	Fixed-displacement gear pump; open-center system		
Standard	93 L/m (25 gpm)	Hydraulic Cycle Times	
Maximum Pressure at Couplings	23 000 kPa (3,336 psi)	Raise	5.2 sec.
System Relief Pressure		Dump	2.0 sec.
		Lower	4.0 sec.
Loader	18 960 kPa (2,750 psi)	Hydraulic Cycle Times (continued)	
Steering	18 000 kPa (2,611 psi)	Extend	4.0 sec.
Controls		Retract	3.0 sec.
Electrohydraulic (EH) 4-function valve with single-lever control for boom and bucket; proportional mini joystick control of 1st auxiliary and telescopic functions			

## 326 P-TIER WHEEL LOADER SPECIFICATIONS

# 326

# P

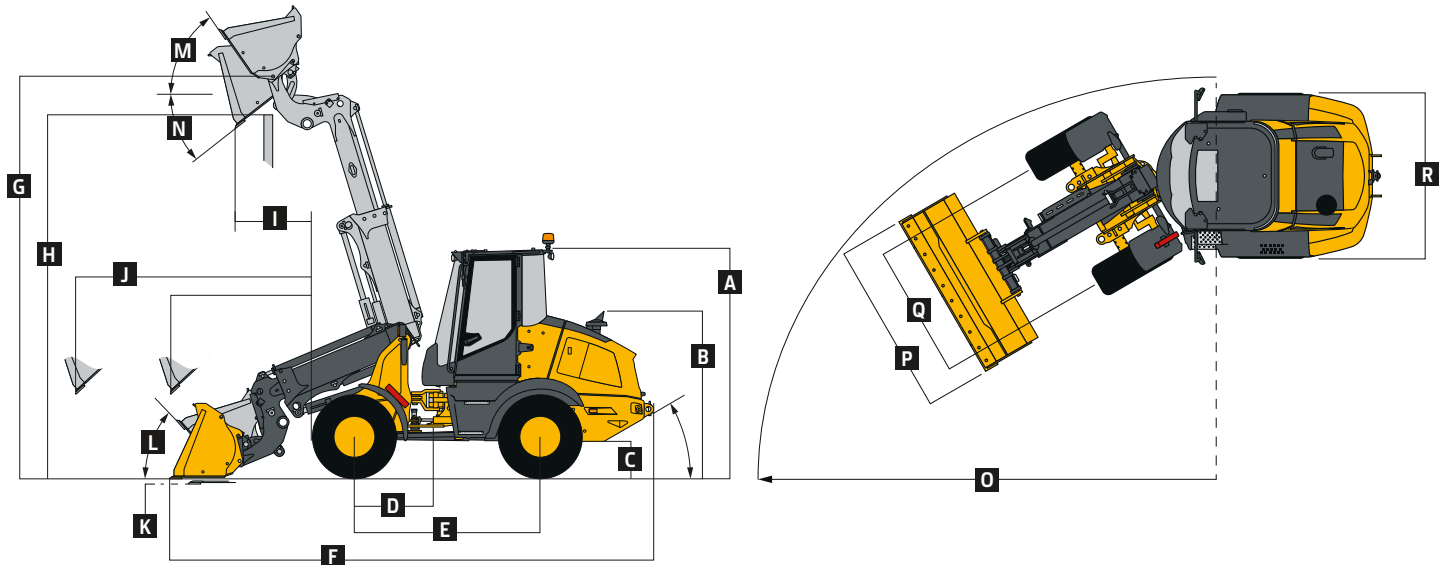
While general information, pictures, and descriptions are provided, some illustrations and text may include product options and accessories NOT AVAILABLE in all regions, and in some countries products and accessories may require modifications or additions to ensure compliance with the local regulations of those countries.

Cylinders		326 P-TIER	
Type	Heat-treated, chrome-plated, polished cylinder rods; hardened steel (replaceable bushings) pivot pins		
Electrical			
Type	Electrical load center with blade-type multi-fused circuits		
Voltage	12 volt		
Number of Batteries	1		
Battery Capacity	925 CCA		
Alternator Rating	120 amp		
Lights (SAE 99)	Driving/front working lights (2), turn signals, flashers, and stop- and taillights		
Operator Station			
Noise Level			
Operator Ear (ISO 6396)	73 dBA		
Bystander (ISO 6395)	101 dBA		
Tires/Wheels			
Tires on Single-Piece Rims	Tread Width*	Width Over Tires†	Change in Vertical Height
405/70R20 Mitas EM-01	1683 mm (5 ft. 6 in.)	2090 mm (6 ft. 10 in.)	+12 mm (+0.5 in.)
405/70R18 Goodyear Powerload	1679 mm (5 ft. 6 in.)	2090 mm (6 ft. 10 in.)	–15 mm (–0.6 in.)
400/70R20 Michelin XMCL	1678 mm (5 ft. 6 in.)	2090 mm (6 ft. 10 in.)	+6 mm (+0.2 in.)
400/70R20 Michelin Bibload	1677 mm (5 ft. 6 in.)	2080 mm (6 ft. 10 in.)	0 mm (0 in.)
400/70R20 Nokian Hakkapeliitta	1680 mm (5 ft. 6 in.)	2080 mm (6 ft. 10 in.)	+10 mm (+0.4 in.)
*Also see <b>Q</b> in <b>Dimensions</b> section on page 8. / †Also see <b>R</b> in <b>Dimensions</b> section on page 8.			
Serviceability			
Refill Capacities		Refill Capacities (continued)	
Cooling System (engine and radiator)	9.0 L (9.5 qt.)	Fuel Tank	90 L (23.8 gal.)
Axle Differentials		Hydraulic/HST Reservoir With Filter	66 L (17.4 gal.)
Front	6.8 L (7.2 qt.)	HST Motor Gearbox	1.3 L (1.4 qt.)
Rear	6.0 L (6.3 qt.)	Front/Rear Axle Planetary Hubs	0.8 L (1.0 qt.)
Engine Oil With Filter	10.2 L (10.8 qt.)	(each)	
Operating Weights			
With standard equipment, 405/70R20 tires, standard counterweight, cab, 79-kg (175 lb.) operator, and full fuel tank			
Loader With Hook/Euro Quick-Coupler		Optional Components	
With 1.1-m³ (1.4 cu. yd.) Stockpiling/General-Purpose (GP) Bucket With Bolt-On Edge	6400 kg (14,110 lb.)	With Hook/Euro Coupler	
		0.8-m³ (1.0 cu. yd.) GP Bucket With Bolt-On Edge	337 kg (743 lb.)
With 1.6-m³ (2.1 cu. yd.) Stockpiling/GP Bucket With Bolt-On Edge	6465 kg (14,253 lb.)	1.1-m³ (1.4 cu. yd.) Stockpiling/GP Bucket With Bolt-On Edge	457 kg (1,008 lb.)
With Fork	6175 kg (13,614 lb.)	1.6-m³ (2.1 cu. yd.) Light-Material Bucket With Bolt-On Edge	520 kg (1,146 lb.)
		Fork Frame and Forks (Class 2)	240 kg (511 lb.)



## Dimensions and Specifications With Hook/ Euro Quick-Coupler and Bucket

### 326 P-TIER



326 P-TIER LOADER WITH HOOK/EURO QUICK-COUPLER AND BUCKET

Dimensions With Hook/Euro Quick-Coupler and Bucket With Bolt-On Edge	0.8-m <sup>3</sup> (1.0 cu. yd.) stockpiling/general purpose	1.1-m <sup>3</sup> (1.4 cu. yd.) stockpiling/general purpose	1.6-m <sup>3</sup> (2.1 cu. yd.) light material	2.0-m <sup>3</sup> (2.6 cu. yd.) light material
A Height to Top of Cab	2790 mm (9 ft. 2 in.)	2790 mm (9 ft. 2 in.)	2790 mm (9 ft. 2 in.)	2790 mm (9 ft. 2 in.)
B Height to Top of Exhaust	2020 mm (6 ft. 8 in.)	2020 mm (6 ft. 8 in.)	2020 mm (6 ft. 8 in.)	2020 mm (6 ft. 8 in.)
C Ground Clearance	305 mm (12 in.)	305 mm (12 in.)	305 mm (12 in.)	305 mm (12 in.)
D Length From Centerline to Front Axle	750 mm (30 in.)	750 mm (30 in.)	750 mm (30 in.)	750 mm (30 in.)
E Wheelbase	2300 mm (7 ft. 7 in.)	2300 mm (7 ft. 7 in.)	2300 mm (7 ft. 7 in.)	2300 mm (7 ft. 7 in.)
F Overall Length, Bucket on Ground	5880 mm (19 ft. 3 in.)	5940 mm (19 ft. 6 in.)	6060 mm (19 ft. 11 in.)	6200 mm (20 ft. 4 in.)
G Height to Hinge Pin, Fully Raised	4960 mm (16 ft. 3 in.)	4960 mm (16 ft. 3 in.)	4960 mm (16 ft. 3 in.)	4960 mm (16 ft. 3 in.)
H Dump Clearance, 38-deg. Full Height	4290 mm (14 ft. 1 in.)	4250 mm (13 ft. 11 in.)	4165 mm (13 ft. 8 in.)	4080 mm (13 ft. 5 in.)
I Reach, 38-deg. <sup>Δ</sup> Dump, Full Height	1800 mm (5 ft. 11 in.)	1040 mm (3 ft. 5 in.)	1070 mm (3 ft. 6 in.)	1180 mm (3 ft. 10 in.)
J Maximum Dump Reach, 55-deg. Dump	5750 mm (18 ft. 10 in.)	5840 mm (19 ft. 2 in.)	5900 mm (19 ft. 4 in.)	6060 mm (19 ft. 11 in.)
K Maximum Digging Depth	90 mm (3.5 in.)	90 mm (3.5 in.)	90 mm (3.5 in.)	90 mm (3.5 in.)
L Maximum Rollback at Ground Level	40 deg.	40 deg.	40 deg.	40 deg.
M Maximum Rollback at Full Height	55 deg.	55 deg.	55 deg.	55 deg.
N Bucket Dump at Full Height	42 deg.	42 deg.	42 deg.	42 deg.
O Turning Circle Radius Over Outside of Bucket Edge	4115 mm (13 ft. 6 in.)	4265 mm (14 ft. 0 in.)	4400 mm (14 ft. 5 in.)	4460 mm (14 ft. 8 in.)
P Bucket Width	2200 mm (7 ft. 3 in.)	2200 mm (7 ft. 3 in.)	2400 mm (7 ft. 10 in.)	2400 mm (7 ft. 10 in.)
Q Tread Width (standard) <sup>§</sup>	1683 mm (5 ft. 6 in.)	1683 mm (5 ft. 6 in.)	1683 mm (5 ft. 6 in.)	1683 mm (5 ft. 6 in.)
R Width Over Tires (standard) <sup>§</sup>	2090 mm (6 ft. 10 in.)	2090 mm (6 ft. 10 in.)	2090 mm (6 ft. 10 in.)	2090 mm (6 ft. 10 in.)
Loader Clearance Circle, Bucket Carry Position	8230 mm (27 ft. 0 in.)	8530 mm (28 ft. 0 in.)	8800 mm (28 ft. 10 in.)	8920 mm (29 ft. 3 in.)

<sup>Δ</sup>42 deg. for 0.8-m<sup>3</sup> (1.0 cu. yd.) stockpiling/general-purpose bucket.

<sup>§</sup>Also see **Tires/Wheels** section on page 7.

## Specifications With Hook/Euro Quick-Coupler and Bucket With Bolt-On Edge

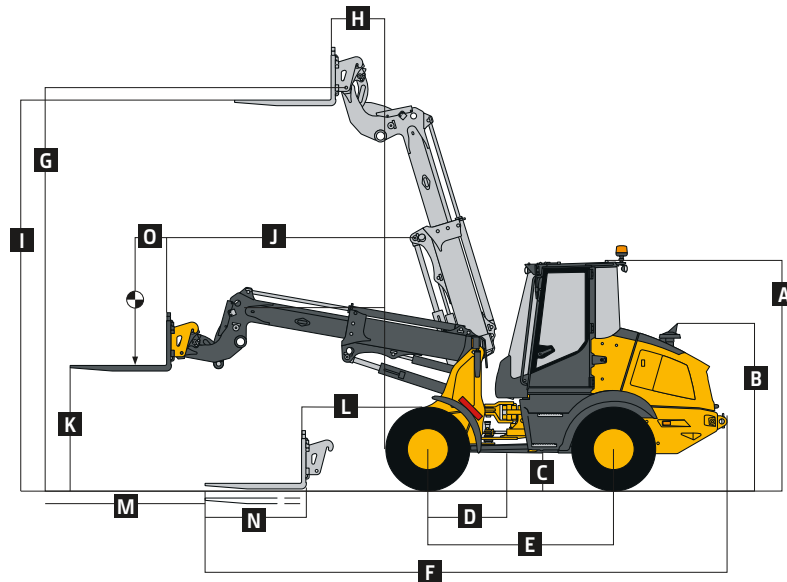
Capacity, Heaped (SAE)	0.8 m <sup>3</sup> (1.0 cu. yd.)	1.1 m <sup>3</sup> (1.4 cu. yd.)	1.6 m <sup>3</sup> (2.1 cu. yd.)	2.0 m <sup>3</sup> (2.6 cu. yd.)
Capacity, Struck (SAE)	0.7 m <sup>3</sup> (0.9 cu. yd.)	0.9 m <sup>3</sup> (1.2 cu. yd.)	1.4 m <sup>3</sup> (1.8 cu. yd.)	1.6 m <sup>3</sup> (2.1 cu. yd.)
Breakout Force (SAE J732C)	5500 kg (12,125 lb.)	4995 kg (11,012 lb.)	4485 kg (9,888 lb.)	3790 kg (8,356 lb.)
Tipping Load, Straight	4350 kg (9,590 lb.)	4240 kg (9,348 lb.)	4125 kg (9,094 lb.)	4050 kg (8,929 lb.)
Tipping Load, Full Turn (SAE)	3900 kg (8,598 lb.)	3780 kg (8,333 lb.)	3670 kg (8,091 lb.)	3600 kg (7,937 lb.)
Rated Operating Load, 50% of Full-Turn Tipping Load (conforms to ISO 14397-1)*	1950 kg (4,299 lb.)	1890 kg (4,167 lb.)	1835 kg (4,045 lb.)	1800 kg (3,968 lb.)

\*Rated operating capacity based on Deere attachments only.



## Dimensions and Specifications With Hook/ Euro Quick-Coupler and Fork

### 326 P-TIER



326 P-TIER LOADER WITH HOOK/EURO QUICK-COUPLER AND FORK

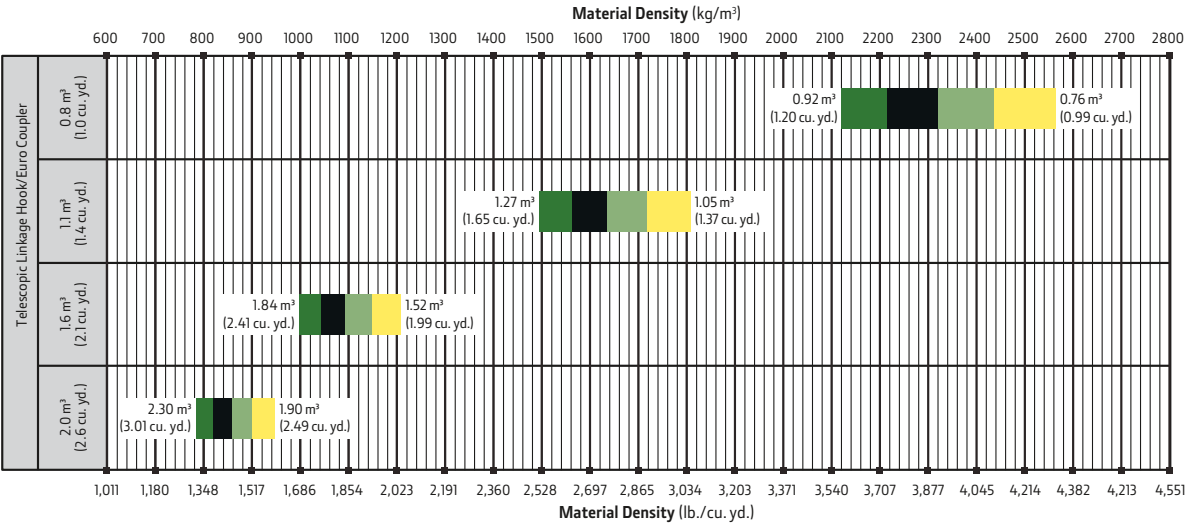
Dimensions With Hook/Euro Quick-Coupler and Fork		1.20-m (48 in.) tine length
A	Height to Top of Cab	2790 mm (9 ft. 2 in.)
B	Height to Top of Exhaust	2020 mm (6 ft. 8 in.)
C	Ground Clearance	305 mm (12 in.)
D	Length From Centerline to Front Axle	750 mm (30 in.)
E	Wheelbase	2300 mm (7 ft. 7 in.)
F	Overall Length, Forks on Ground	5270 mm (17 ft. 3 in.)
G	Height to Hinge Pin, Fully Raised	4960 mm (16 ft. 3 in.)
H	Reach, Fully Raised	660 mm (26 in.)
I	Fork Height, Fully Raised	4800 mm (15 ft. 9 in.)
J	Maximum Reach, Fork Level	1515 mm (5 ft. 0 in.)
	Boom Extended	2695 mm (8 ft. 10 in.)
K	Fork Height, Maximum Reach	1530 mm (5 ft. 0 in.)
L	Reach, Ground Level	1030 mm (3 ft. 5 in.)
M	Depth Below Ground	40 mm (2 in.)
N	Tine Length	1200 mm (48 in.)
O	Load Position, 50% Tine Length	600 mm (24 in.)
Specifications With Hook/Euro Quick-Coupler and Fork		As measured with fork level, centered on tine
	Tipping Load, Straight	3400 kg (7,496 lb.)
	Tipping Load, Full Turn (SAE)	3050 kg (6,724 lb.)
	Rated Operating Load, 50% Full-Turn Tipping Load (conforms to SAE J1197 / ISO 14397-1)*	1525 kg (3,362 lb.)†
	Rated Operating Load, Rough Terrain, 60% Full-Turn Tipping Load (conforms to EN474-3)*	1800 kg (3,968 lb.)†
	Rated Operating Load, Firm and Level Ground, 80% Full-Turn Tipping Load (conforms to EN474-3)*	2300 kg (5,071 lb.)†

\*Rated operating capacity based on Deere attachments only. / †Payload on forks is limited by tilt cylinder.



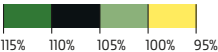
While general information, pictures, and descriptions are provided, some illustrations and text may include product options and accessories NOT AVAILABLE in all regions, and in some countries products and accessories may require modifications or additions to ensure compliance with the local regulations of those countries.

Bucket Selection Guide324 P-TIER



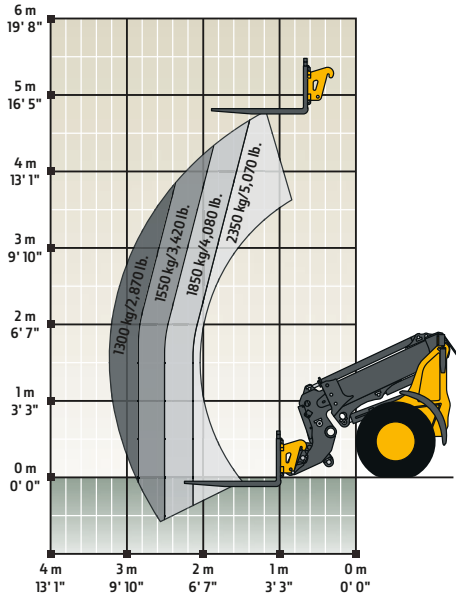
LOOSE MATERIALS			LOOSE MATERIALS		
	kg/m³	lb./cu. yd.		kg/m³	lb./cu. yd.
Chips, pulpwood	288	486	Limestone, coarse, sized	1570	2,646
Cinders (coal, ashes, clinkers)	673	1,134	Limestone, mixed sizes	1682	2,835
Clay and gravel, dry	1602	2,700	Limestone, pulverized or crushed	1362	2,295
Clay, compact, solid	1746	2,943	Sand, damp	2083	3,510
Clay, dry in lump loose	1009	1,701	Sand, dry	1762	2,970
Clay, excavated in water	1282	2,160	Sand, voids, full of water	2083	3,510
Coal, anthracite, broken, loose	865	1,458	Sandstone, quarried	1314	2,214
Coal, bituminous, moderately wet	801	1,350	Shale, broken crushed	1362	2,295
Earth, common loam, dry	1218	2,052	Slag, furnace granulated	1955	3,294
Earth, mud, packed	1843	3,105	Stone or gravel, 37.5 to 87.5-mm (1.5 to 3.5 in.) size	1442	2,430
Granite, broken	1538	2,592	Stone or gravel, 18.75-mm (0.75 in.) size	1602	2,700
Gypsum	2275	3,834			

Bucket Fill Factors

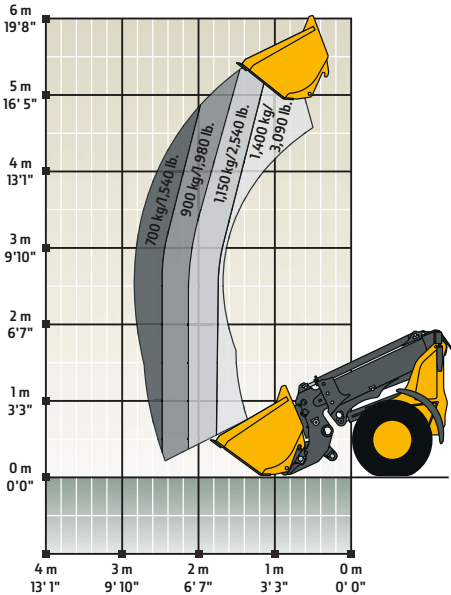


Load Capacities

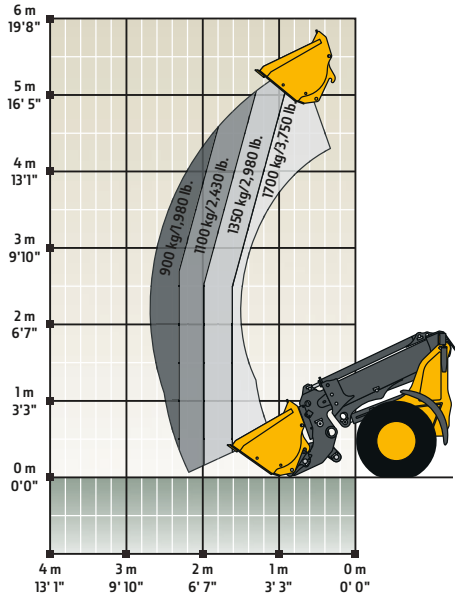
Rated operating capacity based on John Deere attachments only. Rated operating load, firm and level ground, 80% full-turn tipping load (conforms to EN474-3).



Pallet Forks: FEM Class II, 1.2-m (48 in.) Tines, Hook/Euro Quick-Coupler



Bucket, Light Material, 1.3-m³<2.5-m³ (1.7 cu. yd.<3.3 cu. yd.) Size, Hook/Euro Quick-Coupler



Bucket, General Purpose, <1.3-m³ (<1.7 cu. yd.) Size, Hook/Euro Quick-Coupler



# Additional equipment

Key: ● Standard ▲ Optional or special

See your John Deere dealer for further information.

## 326 P Engine

- Antifreeze, -37 deg. C (-34 deg. F)
- Coolant recovery tank
- Fan safety guard
- Fan, suction type, hydraulically driven, proportional speed
- **Engine oil drain [updated]**
- Spin-on engine oil and fuel filter
- Engine oil cooler
- Quick-release fuel filter and water separator
- Under-hood dual-element air cleaner with restriction indicator with dust-evacuator valve
- Prescreened air intake
- Automatic glow plugs for cold start
- ▲ Engine coolant heater, 110 volts

## Electrical

- Starter switch with electric fuel cutoff
- 12-volt system
- Electrical load center with blade-type fuses behind operator's seat
- Standard 925-CCA battery
- Master electrical disconnect switch
- Alternator, 12 volts, 120 amps
- Horn (conforms to SAE J994 / J1446)
- Lights (conform to SAE 99): Driving / Front working LED (2) / Turn signals / Flashers / Stop / Taillights
- LED worklights, front (2) and rear (2)
- ▲ Deluxe LED lighting, additional worklights: front (4), rear (4), and boom (2)
- Reverse warning alarm (conforms to SAE J994 / J1446)
- 9-in. touch-screen multifunction monitor with audible and visual warnings: Low engine oil pressure, engine coolant temperature, hydraulic oil temperature warning light, and parking brake indicator / Gauges and indicators: Engine coolant temperature gauge, fuel level gauge, hydraulic oil temperature gauge, system voltage gauge, fuel consumption indicator, load stability indicator, speedometer, clock, and hour meter
- Indicator lights: Standard and selected options / Amber caution and red stop
- Pre-wired for roof beacon

## 326 P Powertrain/Brakes

- Smooth AutoShift technology up to 38 km/h (23 mph)
- Hydrostatic (HST) transmission: Electric shift control / Single-lever joystick F-N-R / HST oil cooler / Inching pedal / 2 speeds forward and reverse / Infinitely variable speed control
- Rimpull control
- Service brakes, hydraulically actuated, self-adjusting internal wet-disc brake and driveline drum brake
- Parking brake, spring applied, hydraulically released, switch operated
- Conventional front rear differentials, 100% locking front differential

## Hydraulic System

- Electrohydraulic (EH) controls with soft stops and adjustable response settings
- Hydraulic fan for demand-based cooling
- Hydraulic system oil cooler
- In-cab adjustable automatic return-to-dig bucket positioner
- In-cab adjustable boom-height kickout
- In-cab adjustable return to carry
- Boom-float function
- Reservoir sight gauge for hydraulic / HST oil
- Fine-micron hydraulic filters, vertical mounting
- Hydraulic function lockout
- 4-function loader control valve (boom / bucket / telescopic / auxiliary)
- Quick-coupler diagnostic ports: Priority pressure / Hydraulic pump pressure / Control valve pressure / HST pressure

## Operator's Station

- Cab (conforms to SAE J1040, SAE J231, ISO 3471, and ISO 3449): ROPS/FOPS / Heater/defroster / Rubber-plane isolation mounted for noise/vibration reduction / Intermittent front and rear windshield wipers and washers / Tinted safety glass / Adjustable sun visor / Mid-back cloth seat with mechanical suspension / 51-mm (2 in.) retractable seat belt / Full swing-out left and right doors with sliding window in left door
- ▲ Premium air-ride high-back heated seat with headrest and dual lumbar control

## 326 P Operator's Station (continued)

- Radio-ready cab, fused 12-volt radio electrical lead and speakers, and power port
- ▲ AM/FM/Weather-Band (WB) radio
- Air conditioning
- Roof window and wiper
- Storage compartment for operator's manual and other items located under operator seat and 2 options left of operator seat
- Rubber floor mat
- Dual tilt and telescoping steering column
- Rearview mirrors, outside (2) and inside (1) (conform to SAE J985)
- Handholds and steps, ergonomically located and slip resistant (conform to SAE J185)
- ▲ 76-mm (3 in.) retractable seat belt

## Loader Linkage

- Telescopic linkage
- Loader boom service locking bar (conforms to SAE J38)

## Buckets and Attachments

- Hydraulic hook/Euro coupler
- ▲ General-purpose and light-material buckets with bolt-on cutting edges and pallet forks

## Tires

- 405/70R20 Mitas EM-01
- ▲ 405/70R18 Goodyear Powerload
- ▲ 400/70R20 Michelin XMCL
- ▲ 400/70R20 Michelin Bibload
- ▲ 400/70R20 Nokian Hakkapeliitta

## Other

- ▲ Hydraulic reversing fan
- ▲ Front window guard
- Fenders, front and rear
- Articulation locking bar (conforms to SAE J276)
- Lockable engine compartment, fuel fill, and cab
- Cast rear counterweights
- Drawbar, with locking pin
- Lift eyes
- Tie-downs
- ▲ Fire extinguisher
- Ride control
- ▲ Creep control/throttle lock

\*See your John Deere dealer for further information.

While general information, pictures, and descriptions are provided, some illustrations and text may include product options and accessories NOT AVAILABLE in all regions, and in some countries products and accessories may require modifications or additions to ensure compliance with the local regulations of those countries.

Net engine power is with standard equipment including air cleaner, exhaust system, alternator, and cooling fan, at standard conditions per SAE J1349 and DIN 70 020, using No. 2-D fuel at 35 API gravity. No derating is required up to 3050-m (10,000 ft.) altitude. Gross power is without cooling fan. Specifications and design subject to change without notice. Wherever applicable, specifications are in accordance with SAE standards. Except where otherwise noted, these specifications are based on a unit with all standard equipment, ROPS cab, 405/70R120 Mitas EM-01 tires, full fuel tank, air conditioning off, and 79-kg (175 lb.) operator.





MW326PAU (24-07)



**JOHN DEERE**