

750 P

Dozer



JOHN DEERE



PACKED TO POWER YOUR PRODUCTIVITY

When you work in site development, roadbuilding, or aggregates, you need to get the most from your equipment and your operators. We've relied on input from real-world customers like you to design and manufacture our dozers for nearly 75 years. The John Deere 750 P-Tier features some of your best ideas, like generous horsepower, reliable systems and components, and flexible grade-control solutions that can be easily and economically upgraded. And because retaining skilled and productive operators is a priority, we've made the operating experience a main attraction of what the 750 P-Tier has to offer.

Take control in comfort

Designed to elevate operator comfort, the next-generation cab features ergonomic controls arranged to minimize hand and arm movements, advanced touchscreen displays with configurable settings, and optional automatic temperature control (ATC) system. Both the standard deluxe fabric-covered seat and optional premium leather-accented heated/ventilated seat are angled to maximize comfort when making ripping passes.

Put progress on display

Standard on electrohydraulic configurations, eight-inch touchscreen primary display reveals machine health and configurable settings plus rearview (backup) camera (if equipped). Secondary 12.8-inch display for navigating the grade-control interface is added when the machine is outfitted with SmartGrade™ Ready Including 2D Grade Control.

Be aware of what's there

To enhance awareness for confident navigation of busy work areas, optional rearview (backup) camera helps the operator see what's behind the dozer on the in-cab monitor. Optional Advanced Vision System (AVS) includes two digital cameras mounted on the exterior left and right cab-light brackets plus an additional camera mounted to the front grille that integrate with the rearview (backup) camera for a single display on a dedicated in-cab monitor.

Add it up

Even with the highest horsepower and largest blade capacity in its size class, fuel consumption remains comparable to earlier series models. Combined with its ample operating weight, the 750 P-Tier is 12-percent more productive in backfilling applications than its closest competitor.



GRADE-MANAGEMENT OPTIONS
**STREAMLINE
GRADING TASKS &
LEARNING CURVES**



GRADE-MANAGEMENT SOLUTIONS

Our suite of factory-integrated grade-management technologies including standard EZ Grade and optional SmartGrade Ready Including 2D Grade Control, SmartGrade with Topcon, and SmartGrade with Leica simplify difficult grading tasks. These intuitive offerings are easy for operators of any experience level to master. All technology solutions are fully supported by the John Deere dealer network and can be efficiently upgraded as your operation evolves:

- **EZ Grade** aids operators in manually grading smooth finish passes by making small blade corrections automatically.
- **SmartGrade Ready Including 2D Grade Control** includes entry-level slope-control solutions and plug-and-play laser. Slope control assists in grading and maintaining flat, smooth, and sloping surfaces. Operators can view and set blade slope while the system automatically controls the blade to a desired slope. SmartGrade Ready also recognizes plugged-in laser receivers and activates the plug-and-play laser that enables operators to automatically control the blade to a specific slope and elevation using a rotating laser.
- Fully integrated **SmartGrade** features next-generation components and integration, enabling the highest levels of productivity and grading performance. SmartGrade is available in your choice of Topcon or Leica packages. SmartGrade enhancements for jobsites requiring tighter tolerances or with limited GNSS coverage include capabilities for integrated total-station control.
- **Electrohydraulic (EH) controls** make it easy to add the grade-control system of your choice.

Turn, turn, turn

Independent track control speeds up or slows down each side, for smooth, full-power turns. Automatic power boost helps carry big blade loads through turns.

Blade basics

Optional 161-inch-wide blade for the 750 P-Tier enables coverage of larger jobsites in fewer passes. With heavy-duty crossmembers and high-profile push beams, the outside dozer (OSD) blade option is designed for high-production performance.

Hydrostatic dynamics

The John Deere hydrostatic system simplifies operation and redefines durability. Each track has its own independent hydrostatic pump and motor, and the blade and ripper functions have their own independent hydraulic pump, allowing both transmission and hydraulic operating characteristics to be tailored to individual preference without sacrificing hydraulic speed. And heavy loads can be carried through turns and counter-rotations while the dozer is in gear or neutral.

Ready for rugged

The 750 P-Tier retains the thick sheet metal, heavy-duty mainframe, and robust c-frame-to-mainframe joint of its proven 750L predecessor. A durable heavy-duty undercarriage comes standard. Or opt for Extended Life undercarriage with SC-2™-treated bushings, a proven parts coating that delivers up to twice the wear life.

At your service

Simplified routing of the electrical and hydraulic systems is designed for reliability and ease of maintenance. Enlarged service doors provide quick access to conveniently located checkpoints and filters. Hydraulic and hydrostatic oil-change intervals extended from 2,000 to 4,000 hours help further minimize maintenance and expense.



**MAKE FEWER PASSES
ON LARGER JOBSITES
WITH OPTIONAL 161"-WIDE BLADE**



750 P-TIER DOZER



Clear the way

Factory-installed limb risers and screens allow you to put this versatile dozer to work in forestry, land-clearing, and other challenging applications.

Connected machines

John Deere construction equipment comes with in-base connectivity — free from subscriptions or annual renewals. Analyze critical machine data, track utilization, review diagnostic alerts, and more from **the John Deere Operations Center™**. The Operations Center also enables John Deere Connected Support™, which uses data from thousands of connected machines to proactively address issues before they arise. With your approval, your dealer can also remotely monitor machine health, diagnose problems, and even update machine software without a trip to the jobsite.*

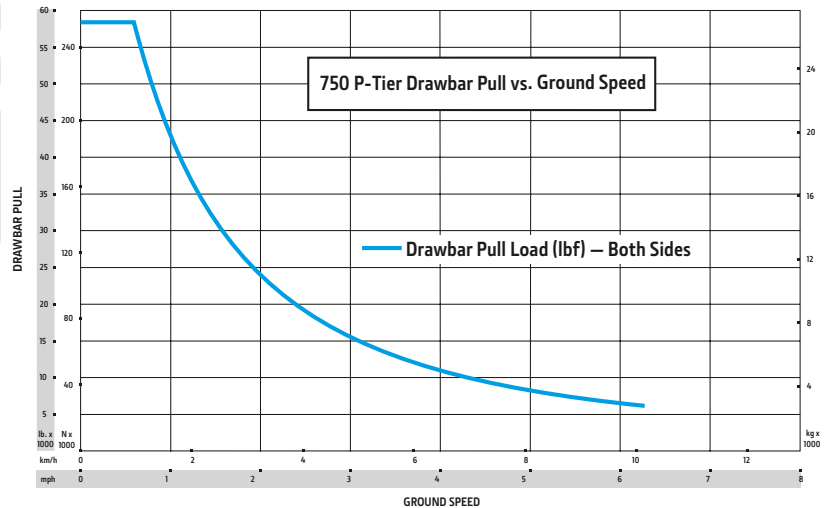
* Availability varies by region and product. Options not available in every country.



750 P-TIER DOZER SPECIFICATIONS

While general information, pictures, and descriptions are provided, some illustrations and text may include product options and accessories NOT AVAILABLE in all regions, and in some countries products and accessories may require modifications or additions to ensure compliance with the local regulations of those countries.

| Engine | 750 P-TIER XLT / 750 P-TIER LGP | 750 P-TIER |
|------------------------------------|--|--|
| Blade Type | Power-Angle-Tilt (PAT) | Outside Dozer (OSD) |
| Manufacturer and Model | John Deere PowerTech™ PVS 6068 | John Deere PowerTech PVS 6068 |
| Non-Road Emission Standard | EPA Final Tier 4/EU Stage V | EPA Final Tier 4/EU Stage V |
| Displacement | 6.8L (414 cu. in.) | 6.8L (414 cu. in.) |
| SAE Net Rated Power | 131 kW (175 hp) at 1,700 rpm | 131 kW (175 hp) at 1,700 rpm |
| Aspiration | Turbocharged with charge-air cooler | Turbocharged with charge-air cooler |
| Air Cleaner | Vacuum-aspirated dual-element dry canister | Vacuum-aspirated dual-element dry canister |
| Cooling | 750 P-TIER XLT / 750 P-TIER LGP / 750 P-TIER | |
| Type | Variable-speed suction fan with automatic reversing | |
| Engine Coolant Rating | −37 deg. C. (−34 deg. F) | |
| Engine Radiator | 10 fins per in. | |
| Powertrain | | |
| Transmission | Automatic, dual-path, hydrostatic (HST) drive; load-sensing feature automatically adjusts speed and power to match changing load conditions; each individually controlled track is powered by a variable-displacement piston pump and motor combination; ground-speed selection buttons on single-lever steering and direction control; reverse speed ratio is fully operator customizable; decelerator pedal provides infinite speed control from full speed to complete stop | |
| System Relief Pressure | 47 574 kPa (6,900 psi) | |
| Travel Speeds | | |
| Forward and Reverse | 9.7 km/h (6.0 mph) | |
| Maximum (optional) | 11.0 km/h (6.8 mph) | |
| Steering | Single-lever steering, speed, direction control, and counter-rotation; full power turns and infinitely variable track speeds provide unlimited maneuverability and optimum control; HST steering eliminates steering clutches and brakes | |
| Final Drives | Double-reduction, planetary final drives mounted independently of track frames and dozer push frames for isolation from shock loads | |
| Total Ratio | 46.41 to 1 | |
| Drawbar Pull | | |
| Maximum | 259 kN (58,250 lb.) | |
| At 1.9 km/h (1.2 mph) | 167 kN (37,500 lb.) | |
| At 3.2 km/h (2.0 mph) | 106 kN (23,750 lb.) | |
| Brakes | | |
| Service | HST (dynamic) braking stops the machine whenever the direction-control lever is moved to neutral or the decelerator is depressed to the detent | |
| Parking | Exclusive safety feature engages wet, multiple-disc brakes whenever the engine stops, the decelerator is depressed to the end of travel, or motion is detected while the transmission control is in neutral; machine cannot be driven with brake applied, minimizing wearout; spring applied, hydraulic release | |
| Hydraulics | 750 P-TIER XLT / 750 P-TIER LGP | 750 P-TIER |
| Type | Open-center load-sense hydraulic system with variable-displacement piston pump | |
| Pump Displacement | 63 cc | |
| System Relief Pressure | 24 993 kPa (3,625 psi) | |
| Differential Pressure | 1896 kPa (275 psi) | |
| Maximum Flow at Unloaded High Idle | 130 L/m (34 gpm) | |
| Control | 3-function electrohydraulic (EH) joystick with proportional roller-angle function | 2-function EH joystick |
| Electrical | 750 P-TIER XLT / 750 P-TIER LGP / 750 P-TIER | |
| Voltage | 24 volts | |
| Capacity | | |
| Battery | 950 CCA | |
| Reserve | 175 min. | |



750 P-TIER DOZER SPECIFICATIONS

750

P

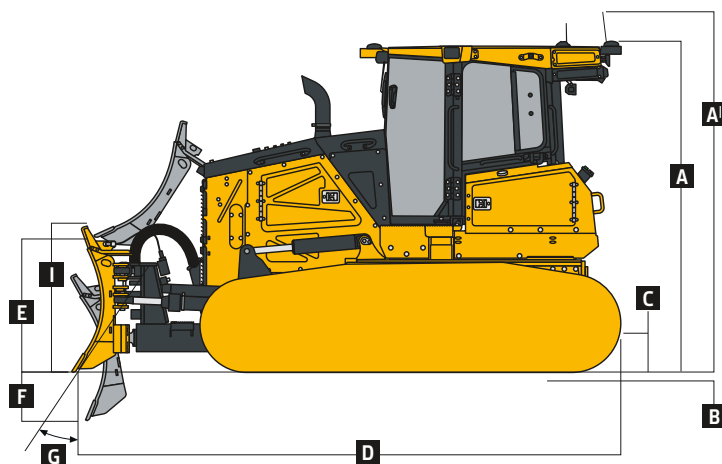
While general information, pictures, and descriptions are provided, some illustrations and text may include product options and accessories NOT AVAILABLE in all regions, and in some countries products and accessories may require modifications or additions to ensure compliance with the local regulations of those countries.

| Electrical <i>(continued)</i> | | 750 P-TIER XLT / 750 P-TIER LGP / 750 P-TIER | | | |
|---|-------------------|---|----------------------------|------------------------|----------------------------|
| Alternator Rating | | | | | |
| Cab | | 145 amp | | | |
| Canopy | | 110 amp | | | |
| Lights | | | | | |
| LED | | Cab-mounted front (2) and cab-mounted rear (2) | | | |
| Premium LED | | Cab-mounted front (4) and cab-mounted rear (4) | | | |
| Undercarriage | | 750 P-TIER XLT | 750 P-TIER LGP | | 750 P-TIER |
| Blade Type | | PAT | PAT | | OSD |
| Tracks | | Track frame with front and rear track guides and sprocket guard; John Deere undercarriage features deep heat-treated, sealed, and lubricated track links and through-hardened, sealed, and lubricated rollers for maximum wear resistance; sprockets are segmented; extreme-duty shoes are available (on some models) for severe applications | | | |
| Track Gauge | | 1880 mm (74 in.) | 2134 mm (84 in.) | 2134 mm (84 in.) | 1880 mm (74 in.) |
| Grouser Width | | 559 mm (22 in.) | 860 mm (34 in.) | 860 mm (34 in.) | 610 mm (24 in.) |
| Chain | | Sealed and lubricated | Sealed and lubricated | | Sealed and lubricated |
| Shoes, Each Side | | 45 | 45 | 45 | 40 |
| Track Rollers, Each Side | | 8 | 8 | 8 | 7 |
| Track Length on Ground | | 3093 mm (122 in.) | 3093 mm (122 in.) | 3093 mm (122 in.) | 2604 mm (103 in.) |
| Ground Contact Area | | 38 232 cm² (5,926 sq. in.) | 58 373 cm² (9,048 sq. in.) | | 35 677 cm² (5,530 sq. in.) |
| Ground Pressure | | 43.7 kPa (6.34 psi) | 30.5 kPa (4.42 psi) | 30.5 kPa (4.43 psi) | 47.8 kPa (6.93 psi) |
| Track Pitch | | 191 mm (7.5 in.) | 191 mm (7.5 in.) | 191 mm (7.5 in.) | 191 mm (7.5 in.) |
| Oscillation at Front Roller | | ±135 mm (±5.3 in.) | ±127 mm (±5.0 in.) | ±127 mm (±5.0 in.) | ±110 mm (±4.3 in.) |
| Operator Station | | 750 P-TIER XLT / 750 P-TIER LGP / 750 P-TIER | | | |
| ROPS (ISO 3471 – 2008) and FOPS (ISO 3449 – 2005) Level II | | | | | |
| Serviceability | | | | | |
| Refill Capacities | | Refill Capacities <i>(continued)</i> | | | |
| Fuel Tank With Lockable Cap | 362 L (95.5 gal.) | Reservoir With Filter | | | |
| Cooling System With Recovery Tank | 31.4 L (8.3 gal.) | Transmission | | 57 L (15.1 gal.) | |
| Engine Oil With Filter | 28 L (7.4 gal.) | Hydraulic | | 98 L (25.9 gal.) | |
| | | Diesel Exhaust Fluid (DEF) Reservoir | | 14.2 L (3.8 gal.) | |
| Operating Weights | | 750 P-TIER XLT | 750 P-TIER LGP | | 750 P-TIER |
| <i>Base Weight (with standard equipment, rollover protective structures [ROPS], full fuel tank, and 79-kg [175 lb.] operator)</i> | | 17 041 kg (37,569 lb.) | 18 133 kg (39,976 lb.) | 18 162 kg (40,040 lb.) | 17 386 kg (38,330 lb.) |
| Optional Components | | | | | |
| Cab With Pressurizer and Heater/Air Conditioner | 230 kg (507 lb.) | 230 kg (507 lb.) | 230 kg (507 lb.) | 230 kg (507 lb.) | |
| Rear Screen | | | | | |
| ROPS Canopy | 28 kg (62 lb.) | 28 kg (62 lb.) | 28 kg (62 lb.) | 28 kg (62 lb.) | |
| Cab With Air Conditioner | 49 kg (108 lb.) | 49 kg (108 lb.) | 49 kg (108 lb.) | 49 kg (108 lb.) | |
| Screens – Full Enclosure, Cab With Air Conditioner | 219 kg (483 lb.) | 219 kg (483 lb.) | 219 kg (483 lb.) | 219 kg (483 lb.) | |
| Limb Risers (ROPS canopy and cab) | 186 kg (410 lb.) | 186 kg (410 lb.) | 186 kg (410 lb.) | 186 kg (410 lb.) | |
| Heavy-Duty Grille | 30 kg (65 lb.) | 30 kg (65 lb.) | 30 kg (65 lb.) | 30 kg (65 lb.) | |
| Rear Counterweight | 326 kg (720 lb.) | 326 kg (720 lb.) | 326 kg (720 lb.) | 326 kg (720 lb.) | |
| Retrieval Hitch | 37 kg (81 lb.) | 37 kg (81 lb.) | 37 kg (81 lb.) | 37 kg (81 lb.) | |
| Drawbar, Extended Rigid | 111 kg (245 lb.) | 111 kg (245 lb.) | 111 kg (245 lb.) | 111 kg (245 lb.) | |
| Center Chain Guides | 61 kg (135 lb.) | 61 kg (135 lb.) | 61 kg (135 lb.) | 61 kg (135 lb.) | |
| Full-Length Rock Guards | 221 kg (487 lb.) | 221 kg (487 lb.) | 221 kg (487 lb.) | 178 kg (392 lb.) | |
| Track Shoes | | | | | |
| 560-mm (22 in.) Moderate Duty | In base | –759 kg (–1,674 lb.) | –759 kg (–1,674 lb.) | — | |
| 610-mm (24 in.) Moderate Duty | 86 kg (190 lb.) | –673 kg (–1,484 lb.) | –673 kg (–1,484 lb.) | In base | |
| 610-mm (24 in.) Extreme Duty | 350 kg (772 lb.) | –409 kg (–902 lb.) | –409 kg (–902 lb.) | 230 kg (507 lb.) | |
| 710-mm (28 in.) Moderate Duty | — | –363 kg (–800 lb.) | –363 kg (–800 lb.) | — | |
| 860-mm (34 in.) Moderate Duty | — | In base | In base | — | |

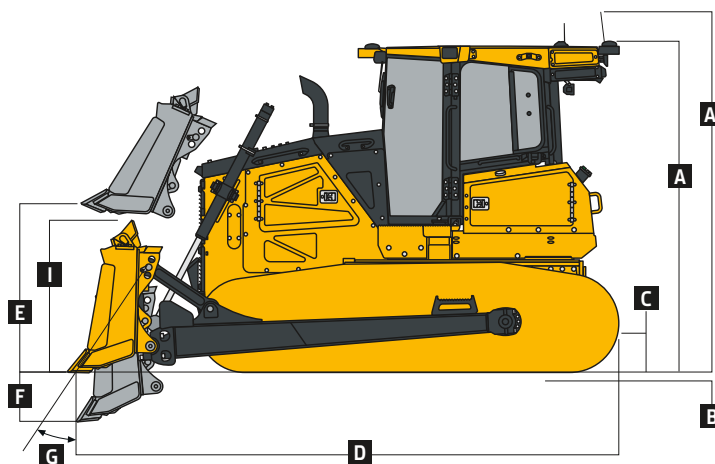
750 P-TIER

While general information, pictures, and descriptions are provided, some illustrations and text may include product options and accessories NOT AVAILABLE in all regions, and in some countries products and accessories may require modifications or additions to ensure compliance with the local regulations of those countries.

| Machine Dimensions | 750 P-TIER XLT | 750 P-TIER LGP | 750 P-TIER |
|--|----------------------------------|----------------------------------|------------------------------------|
| Blade Type | Power-Angle-Tilt (PAT) | PAT | Outside Dozer (OSD) |
| A Overall Height to Roof (includes antenna base and grouser height) | 3248 mm (10 ft. 8 in.) | 3248 mm (10 ft. 8 in.) | 3248 mm (10 ft. 8 in.) |
| A' Overall Height With Limb Risers (includes grousers) | 3343 mm (11 ft. 6 in.) | 3343 mm (11 ft. 6 in.) | 3343 mm (11 ft. 6 in.) |
| B Tread Depth With Single-Bar Grouser | | | |
| Moderate Duty | 69 mm (2.7 in.) | 69 mm (2.7 in.) | 69 mm (2.7 in.) |
| Extreme Duty | 69 mm (2.7 in.) | 69 mm (2.7 in.) | 69 mm (2.7 in.) |
| C Ground Clearance in Dirt | 358 mm (14 in.) | 358 mm (14 in.) | 358 mm (14 in.) |
| D Overall Length | 5359 mm (211 in.) (17 ft. 7 in.) | 5359 mm (211 in.) (17 ft. 7 in.) | 6054 mm (238 in.) (19 ft. 10 in.) |
| D' Overall Length With Extended Drawbar | 5602 mm (221 in.) (18 ft. 5 in.) | 5602 mm (221 in.) (18 ft. 5 in.) | 6297 mm (248 in.) (20 ft. 8 in.) |
| E Blade Lift Height | 904 mm (36 in.) (3 ft. 0 in.) | 904 mm (36 in.) (3 ft. 0 in.) | 1035 mm (40.7 in.) (3 ft. 4.7 in.) |
| F Blade Digging Depth | 648 mm (25.5 in.) | 648 mm (25.5 in.) | 594 mm (23.4 in.) |
| G Blade Cutting-Edge Angle, Adjustable | 54.3 to 59.4 deg. | 54.3 to 59.4 deg. | 51.2 to 59.2 deg. |



750 P-TIER XLT / 750 P-TIER LGP WITH POWER-ANGLE-TILT (PAT) BLADE



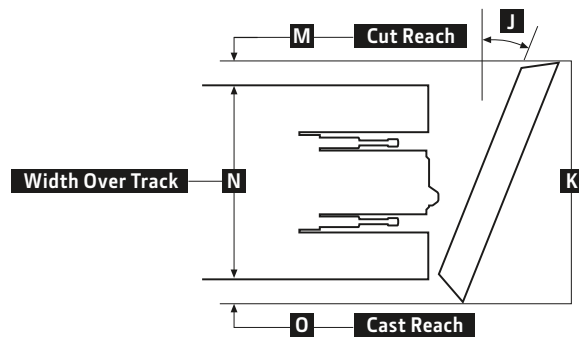
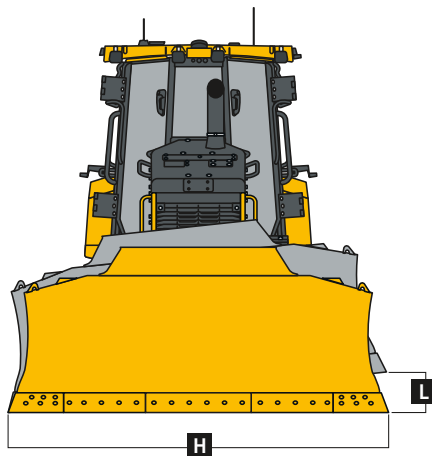
750 P-TIER WITH OUTSIDE DOZER (OSD) BLADE

| Machine Dimensions (continued) | 750 P-TIER XLT | 750 P-TIER LGP | 750 P-TIER |
|---|----------------|----------------|------------------------------------|
| Semi-U | | | |
| H Blade Width | — | — | 3265 mm (129 in.) (10 ft. 9 in.) |
| I Blade Height | — | — | 1435 mm (56.5 in.) (4 ft. 8.5 in.) |
| SAE Capacity | — | — | 4.3 m ³ (5.6 cu. yd.) |
| Weight | — | — | 1350 kg (2,976 lb.) |
| Push-Beam Assembly Weight (without blade) | — | — | 1274 kg (2,809 lb.) |
| L Blade Tilt | — | — | 681 mm (27 in.) |
| N Width Over Track | — | — | 2440 mm (96 in.) (8 ft. 0 in.) |

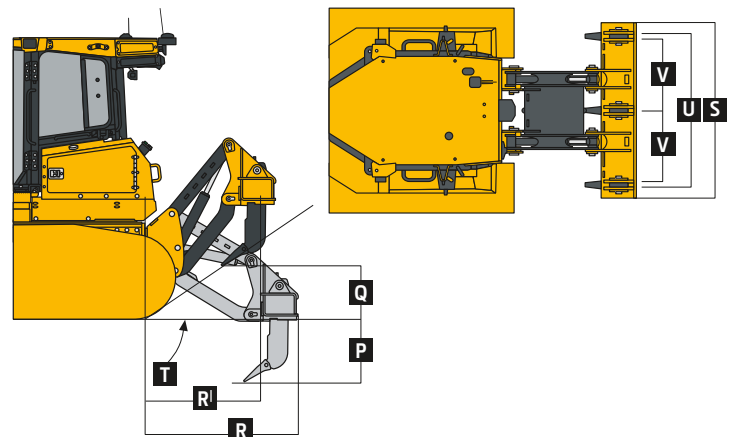
While general information, pictures, and descriptions are provided, some illustrations and text may include product options and accessories NOT AVAILABLE in all regions, and in some countries products and accessories may require modifications or additions to ensure compliance with the local regulations of those countries.

750 P-TIER

| Machine Dimensions (continued) | 750 P-TIER XLT | 750 P-TIER LGP | 750 P-TIER |
|--|--------------------------------------|---------------------------------------|----------------------------------|
| Blade Type | PAT | PAT | OSD |
| Straight | | | |
| H Blade Width | 3296 mm (130 in.) (10 ft. 10 in.) | 3962 mm (156 in.) (13 ft. 0 in.) | 4083 mm (161 in.) (13 ft. 5 in.) |
| I Blade Height | 1444 mm (57 in.) (4 ft. 9 in.) | 1427 mm (56 in.) (4 ft. 8 in.) | — |
| SAE Capacity | 3.9 m ³ (5.2 cu. yd.) | 4.5 m ³ (5.9 cu. yd.) | 4.6 m ³ (6.0 cu. yd.) |
| Weight | 967 kg (2,132 lb.) | 1111 kg (2,449 lb.) | 1140 kg (2,513 lb.) |
| C-Frame Assembly Weight (without blade) | 1324 kg (2,926 lb.) | 1324 kg (2,926 lb.) | 1324 kg (2,926 lb.) |
| J Blade Angle | 24 deg. | 24 deg. | 24 deg. |
| K Overall Width With Blade Angled | 3011 mm (118.5 in.) (9 ft. 10.5 in.) | 3619 mm (142.5 in.) (11 ft. 10.5 in.) | 3729 mm (147 in.) (12 ft. 3 in.) |
| L Blade Tilt | 432 mm (17 in.) | 502 mm (20 in.) | 518 mm (20 in.) |
| M Cut Reach | 57 mm (2 in.) | 116 mm (5 in.) | 171 mm (7 in.) |
| N Width Over Track | 2440 mm (96 in.) (8 ft. 0 in.) | 2989 mm (118 in.) (9 ft. 10 in.) | — |
| O Cast Reach | 457 mm (18 in.) | 515 mm (20 in.) | 571 mm (22.5 in.) |



| Rear Ripper | 750 P-TIER XLT / 750 P-TIER LGP / 750 P-TIER |
|--|--|
| Multi-shank (3) parallelogram ripper | |
| Weight | 1957 kg (4,314 lb.) |
| P Maximum Penetration | 741 mm (29 in.) |
| Q Maximum Clearance Under Tip | 638 mm (25 in.) |
| R Overall Length, Lowered Position | 1689 mm (67 in.) (5 ft. 7 in.) |
| R^l Overall Length, Raised Position | 1448 mm (57 in.) (4 ft. 9 in.) |
| S Overall Beam Width | 2134 mm (84 in.) (7 ft. 0 in.) |
| T Slope Angle (full raise) | 22 deg. |
| U Ripping Width | 1880 mm (74 in.) (6 ft. 2 in.) |
| V Distance Between Shanks | 902 mm (36 in.) (3 ft. 0 in.) |



Additional equipment

Key: ● Standard ▲ Optional or special

See your John Deere dealer for further information.

| 750 | |
|---------|---|
| P-TIER | Engine |
| ● | Meets EPA Final Tier 4/EU Stage V emissions |
| ● | John Deere PowerTech™ PVS 6068 6.8L engine |
| ● | Wet-sleeve cylinder liners |
| ● | Eco mode |
| ▲ | Exhaust stack, black |
| ▲ | Exhaust stack, chrome |
| ● | Turbocharged and air-to-air after-cooled |
| ● | Dual-element dry-canister air cleaner |
| ● | Engine glow-plug starting system |
| ● | Programmable auto engine shutdown |
| ● | Automatic turbo cool-down timer |
| ● | Exhaust filter, under hood, with vertical stack |
| ● | Fuel filters with automatic electronic priming |
| ▲ | Severe-duty fuel filter |
| ▲ | Engine coolant heater, 120 volt |
| ● | 110-amp alternator (canopy) |
| ● | 145-amp alternator (cab) |
| Cooling | |
| ● | Hydraulically driven cooling fan, variable-speed suction type |
| ● | Engine cooling rated –37 deg. C (–34 deg. F) |
| ● | Automatic, programmable reversing fan |
| ● | Engine radiator, hydrostatic (HST) cooler, and hydraulic cooler, 10 fins per inch |

| 750 | |
|------------------|--|
| P-TIER | Cooling (continued) |
| ● | Enclosed safety fan guard (conforms to SAE J1308 and ISO 3457) |
| ● | Single-plane non-stacked cooler design |
| Powertrain | |
| ● | Dual-path HST transmission |
| ● | Reverse-speed ratios (100%, 115%, and 130% presets or operator defined) |
| ● | Operator-selectable decelerator function (hydrostats and engine or hydrostats only) |
| ● | Single-lever steering with counter-rotate function |
| ● | Full power turns with infinitely variable track speed |
| ● | HST (dynamic) service brakes |
| ● | Wet, multi-disc parking brake |
| ● | Remote diagnostic test ports |
| ● | Automatic cold-weather transmission warmup system |
| ● | Automatic transmission derating for exceeded system temperatures |
| ● | Vented dedicated transmission reservoir and filtration system separate from hydraulic system |
| Hydraulic System | |
| ● | Load-sense electrohydraulic (EH) system with variable-displacement piston pump |
| ● | 3-spool EH control valve for Power-Angle-Tilt (PAT) |
| ● | 3-spool EH control valve for Outside Dozer (OSD) with single auxiliary |

| 750 | |
|----------------------------------|--|
| P-TIER | Hydraulic System (continued) |
| ▲ | 4-spool EH control valve for PAT with single auxiliary |
| ● | Electrohydraulics with EZ Grade |
| ● | Hydrau™ All-Season Hydraulic Oil, –25 deg. C to 50 deg. C (–13 deg. F to 122 deg. F) |
| ▲ | Hydrau™ XR Hydraulic Oil, –40 deg. C to 40 deg. C (–40 deg. F to 104 deg. F) |
| ▲ | Cylinder-rod scrapers (PAT only) |
| ● | Hydraulic pump, standard |
| ▲ | Hydraulic pump, high flow |
| ▲ | Hydraulic pump for direct-drive winch |
| ● | Vented dedicated hydraulic reservoir and filtration system separate from transmission system |
| Precision Construction Solutions | |
| ▲ | John Deere G5 Plus 325-mm (12.8 in.) touchscreen dedicated grade-control display |
| ▲ | SmartGrade™ Ready Including 2D Grade Control system |
| ▲ | SmartGrade with Topcon |
| ▲ | SmartGrade with Leica |
| Undercarriage | |
| ● | Full-length, smooth-surface track frame covers |
| ● | Double-flange rollers |
| ● | Oscillating undercarriage |
| ● | Heavy-duty sealed and lubricated undercarriage |
| ▲ | Extended Life undercarriage with SC-2™ bushings |
| ▲ | Full-length rock guards |

While general information, pictures, and descriptions are provided, some illustrations and text may include product options and accessories NOT AVAILABLE in all regions, and in some countries products and accessories may require modifications or additions to ensure compliance with the local regulations of those countries.

Net engine power is with standard equipment including air cleaner, exhaust system, alternator, and cooling fan at test conditions specified per ISO9249. No derating is required up to 3050-m (10,000 ft.) altitude. Also available: winches, fair-leads, log arches, skidding grapples, trash packages, landfill protection packages, cable plows, side booms, field-installed cab for canopy, canopy heater, and fire-suppression systems. Specifications and design subject to change without notice. Wherever applicable, specifications are in accordance with SAE standards. Except where otherwise noted, these specifications are based on a unit with ROPS, full fuel tank, and 79-kg (175 lb.) operator. Operator station ROPS and FOPS certified.

Additional equipment *(continued)*

Key: ● Standard ▲ Optional or special

See your John Deere dealer for further information.

| 750 | |
|--------|---|
| P-TIER | Operator's Station |
| ▲ | Canopy cab with under-seat heater |
| ▲ | Enclosed cab with air/heat |
| ▲ | Automatic temperature control (ATC) system |
| ● | Standard seat, vinyl with heavy-duty air suspension (canopy) |
| ● | Deluxe seat, cloth with heavy-duty air-suspension (cab) |
| ▲ | Premium seat, leather-accented, heated and ventilated, with heavy-duty air-suspension (cab) |
| ● | Under-seat heater (canopy) |
| ● | AM/FM/Weather-Band (WB) radio with front auxiliary (cab) |
| ▲ | Premium radio with Bluetooth®, AM/FM/WB radio, remote auxiliary, and remote USB port (cab) |
| ● | 203-mm (8 in.) touchscreen multifunction/multilanguage color LCD monitor: Tachometer, hour meter, transmission direction and speed (forward/reverse), exhaust filter status, ambient temperature, and clock |
| ● | Built-in diagnostics: Diagnostic-code details / Sensor values / Calibrations / Individual circuit tester |
| ● | Backup alarm |
| ▲ | Advanced Vision System with dedicated display |
| ▲ | Rearview camera |

| 750 | |
|-----------------|--|
| P-TIER | Operator's Station <i>(continued)</i> |
| ● | 12-volt accessory plug (1) |
| ▲ | Additional 12-volt accessory plug |
| ● | Keyless start with multiple security codes |
| ● | Retractable seat belt, 76 mm (3 in.) (conforms to SAE J368) |
| ▲ | Fire extinguisher mounting bracket |
| ▲ | External-mounted rear-attachment mirror (cab) |
| ● | Front, door, and rear wipers and washers (cab) |
| Overall Vehicle | |
| ● | Environmental drain package |
| ▲ | Fluid-sample ports |
| ● | JDLINK™ wireless machine communication system (available in specific countries; see your local dealer for details) |
| ▲ | Quick service ports (HST, hydraulic, and engine oil, and coolant) |
| ● | LED lights (configuration dependent on cab-trim package) |
| ▲ | Premium LED lights (configuration dependent on cab-trim package) |
| ● | Engine-compartment light |
| ▲ | Beacon light |
| ▲ | Heavy-duty grille |
| ▲ | Final-drive trash guards (waste applications) |

| 750 | | | |
|-------------|--|-----|---|
| P-TIER | Overall Vehicle <i>(continued)</i> | | |
| ▲ | Full screens for cab | | |
| ▲ | Rear window screen | | |
| ▲ | Large debris prescreen | | |
| ▲ | Forestry limb risers (sweeps) | | |
| ● | Lockable master electrical disconnect switch | | |
| Attachments | | | |
| ▲ | Rear ripper, parallelogram, 3 shank | | |
| ▲ | Single rear counterweight | | |
| ▲ | Retrieval hitch with pin | | |
| ▲ | Retrieval hitch with 1 counterweight | | |
| ▲ | Extended rigid drawbar | | |
| ▲ | Extended rigid drawbar with 1 counterweight | | |
| ▲ | Threaded pitch jack (OSD only) | | |
| STD | XLT | LGP | 750 P-Tier Shoes |
| | ● | ▲ | 560-mm (22 in.) moderate service |
| ● | ▲ | ▲ | 610-mm (24 in.) moderate service with clipped corners |
| ▲ | ▲ | ▲ | 610-mm (24 in.) extreme service with clipped corners |
| | | ▲ | 710-mm (28 in.) moderate service |
| | | ● | 860-mm (34 in.) moderate service with clipped corners |

While general information, pictures, and descriptions are provided, some illustrations and text may include product options and accessories NOT AVAILABLE in all regions, and in some countries products and accessories may require modifications or additions to ensure compliance with the local regulations of those countries.

Net engine power is with standard equipment including air cleaner, exhaust system, alternator, and cooling fan at test conditions specified per ISO9249. No derating is required up to 3050-m (10,000 ft.) altitude. Also available: winches, fair-leads, log arches, skidding grapples, trash packages, landfill protection packages, cable plows, side booms, field-installed cab for canopy, canopy heater, and fire-suppression systems. Specifications and design subject to change without notice. Wherever applicable, specifications are in accordance with SAE standards. Except where otherwise noted, these specifications are based on a unit with ROPS, full fuel tank, and 79-kg (175 lb.) operator. Operator station ROPS and FOPS certified.



MD750PAU (25-03)



JOHN DEERE